

# DLE and ISD Installation

[Installing an Option DLE Card \(ST9818 / ST9820 / ST9821 / ST9822\)](#)

[Installing an Option DLE Card \(ST9830\)](#)

[Installing an ISD Card \(ST9917 / ST9920 / ST9921\)](#)

[Installing an ISD Card \(ST9922\)](#)

## Notice

Copyright © 2020 by Source Technologies. All rights reserved.

No part of this document may be reproduced or utilized in any form or by any means, electronic or mechanical, including photocopying, recording or by any information storage and retrieval system, without permission in writing from Source Technologies.

Published in the United States of America by:  
Source Technologies  
11401A Granite Street, Charlotte, NC 28273

Author: Source Technologies.

## NOTICE

To the best of our knowledge the information in this publication is accurate; however, Source Technologies does not assume any responsibility or liability for the accuracy or completeness of, or consequences arising from, such information. This document is intended for informational purposes only. Mention of trade names or commercial products does not constitute endorsement or recommendation for use by Source Technologies. Final determination of the suitability of any information or product for use contemplated by any user, and the manner of that use, is the sole responsibility of the user. We recommend that anyone intending to rely on any recommendation of materials or procedures mentioned in this publication should satisfy himself as to such suitability, and that he can meet all applicable safety and health standards.

All trademarks and registered trademarks appearing in this document are the property of their respective owners.

Document Number: 108462  
Revision: C

## Installing an Option DLE Card (ST9818 / ST9820 / ST9821 / ST9822)



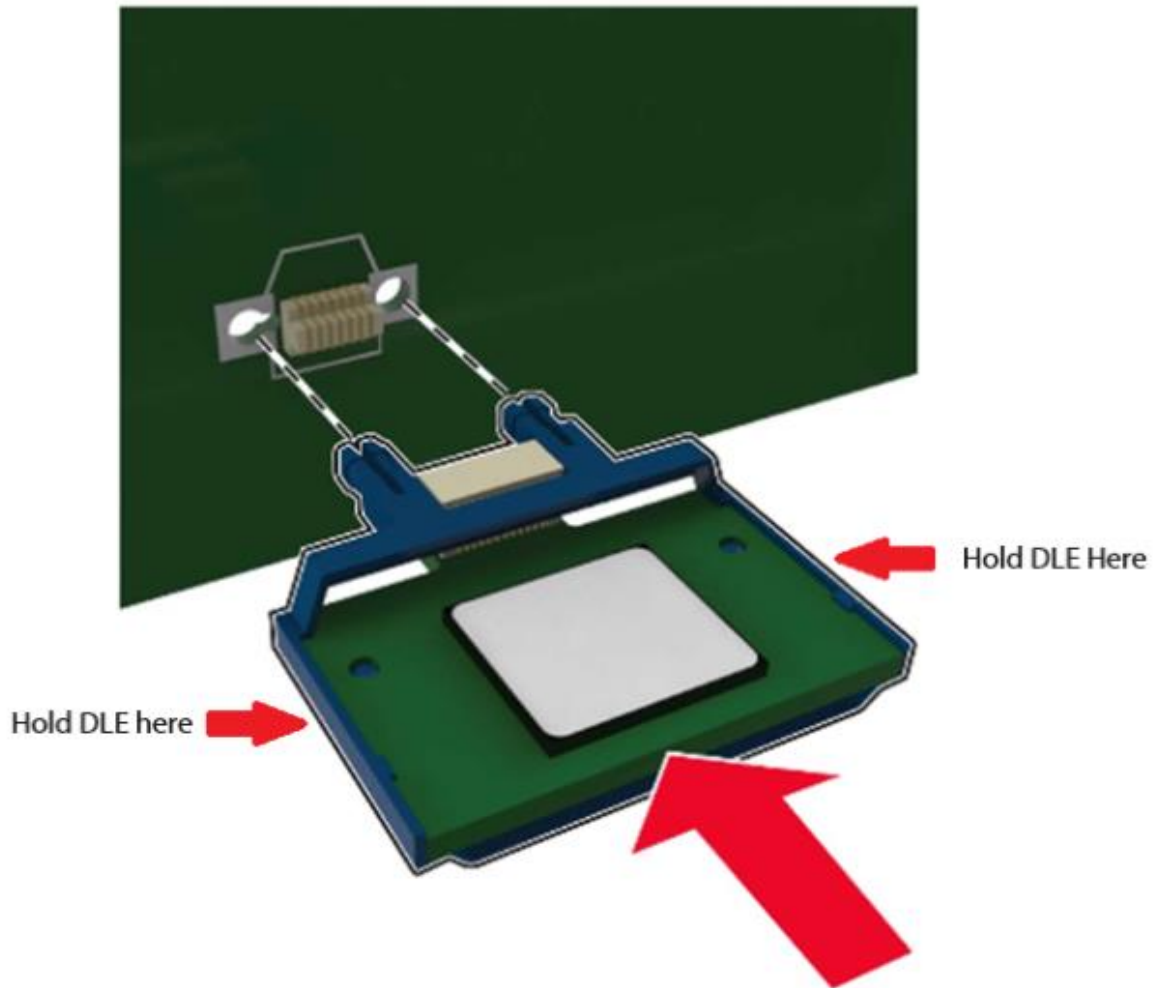
**Caution--Shock Hazard:** To avoid the risk of electrical shock, turn off the printer and remove the power cord.

1. Turn off the printer.
2. Unplug the power cord from the electrical outlet or from the printer.
3. Open the controller board access cover, by using a flat blade screw and removing the screw and pulling the cover open. See below pictures.



4. Unpack the option card.  
**Warning--Potential Damage:** Do not touch the connection points along the edge of the card. Controller board electronic components are easily damaged by static electricity. Touch a metal surface on the printer before touching any components or connectors.

5. Holding the option card by the edges, push the DLE firmly into place.



Note: The entire length of the connector on the card must touch and be flush against the controller board.

Warning—Potential Damage: Improper installation of the card may cause damage to the card and/or the control board.

6. Close the access cover and replace the screw removed in step 3.
7. Reconnect the power cord removed in step 2.



**Caution--Shock Hazard:** To avoid the risk of electrical shock or fire, connect the power cord to an appropriately rated and grounded electrical outlet that is near the product and easily accessible.

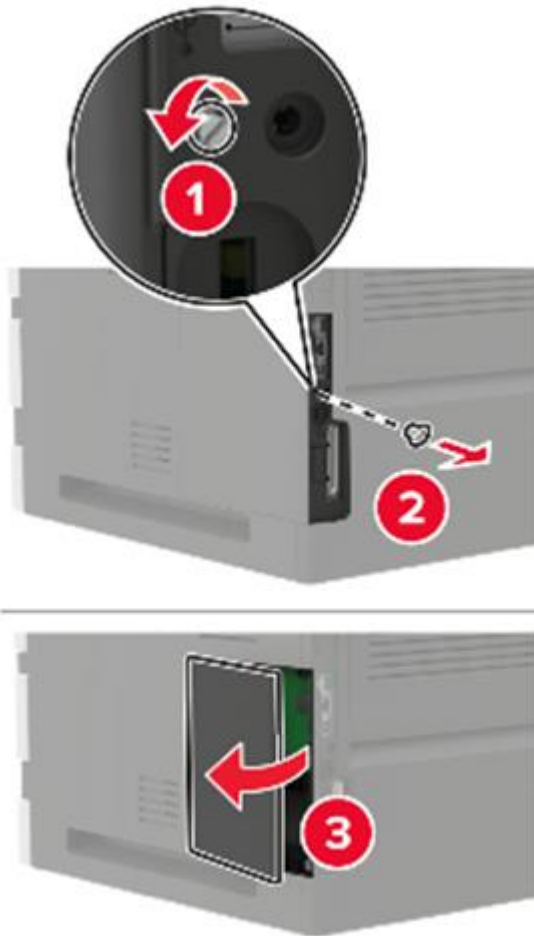
8. Turn on the printer.

## Installing an Option DLE Card (ST9830)



**Caution--Shock Hazard:** To avoid the risk of electrical shock, turn off the printer and remove the power cord.

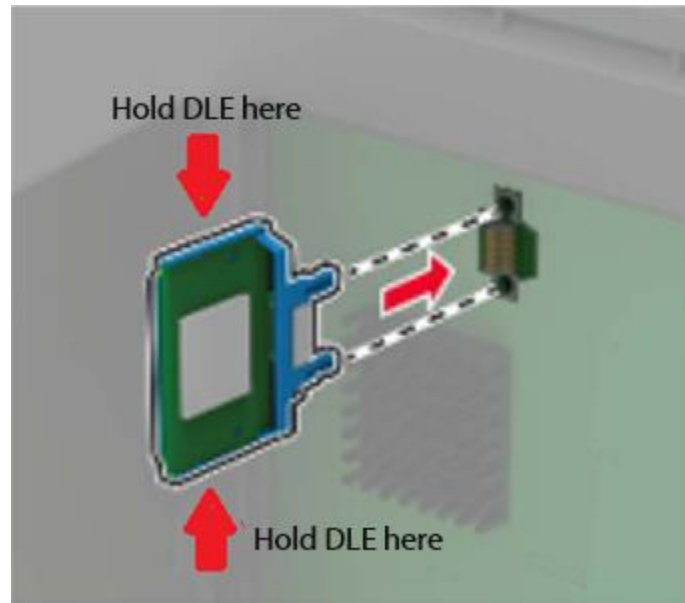
1. Turn off the printer.
2. Unplug the power cord from the electrical outlet or from the printer.
3. Open the controller board access cover, by using a flat blade screw and removing the screw and pulling the cover open. See below pictures.



4. Unpack the option card.

**Warning--Potential Damage:** Do not touch the connection points along the edge of the card. Controller board electronic components are easily damaged by static electricity. Touch a metal surface on the printer before touching any components or connectors.

5. Holding the option card by the edges. Push the DLE firmly into place.



Note: The entire length of the connector on the card must touch and be flush against the controller board.

Warning—Potential Damage: Improper installation of the card may cause damage to the card and/or the control board.

6. Close the access cover and replace the screw removed in step 3.
7. Reconnect the power cord removed in step 2.



**Caution--Shock Hazard:** To avoid the risk of electrical shock or fire, connect the power cord to an appropriately rated and grounded electrical outlet that is near the product and easily accessible.

8. Turn on the printer.

## Installing an ISD Card (ST9917 / ST9920 / ST9921)



**Caution--Shock Hazard:** To avoid the risk of electrical shock, turn off the printer and remove the power cord.

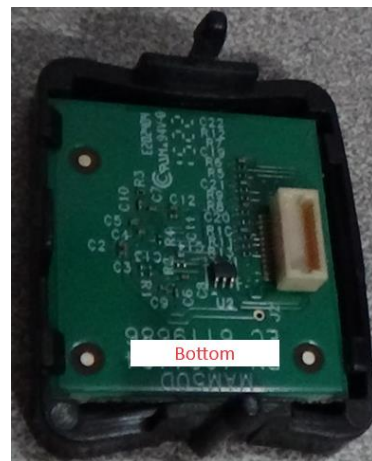
1. Turn off the printer.
2. Unplug the power cord from the electrical outlet or from the printer.
3. Open the controller board access cover, by using a flat blade screw and removing the screw and pulling the cover open. See below pictures.



4. Unpack the ISD card.

**Warning--Potential Damage:** Do not touch the connection points along the edge of the card. Controller board electronic components are easily damaged by static electricity. Touch a metal surface on the printer before touching any components or connectors.

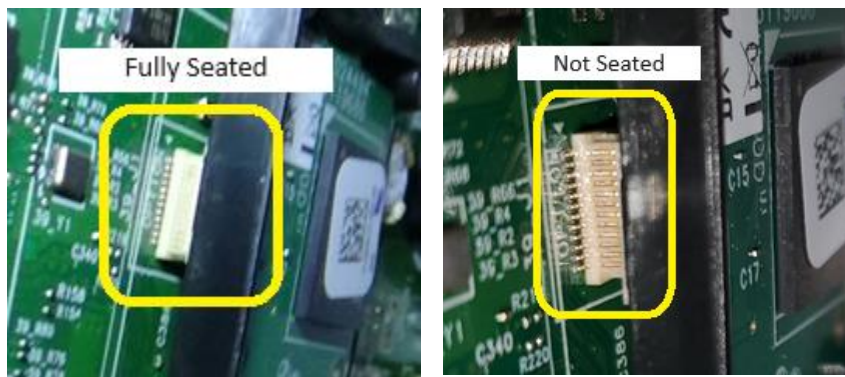
5. With the ISD out of the package. Locate the small connector on the bottom of the board.



6. Locate the ISD Installation area on the control board (Yellow). Holding the card by the edges. Align the connector on the bottom of the ISD with the connector on the control board (black rectangle) The ISD mount post will line up with the holes in the control board (black circles). Push the ISD firmly into place.



7. Make sure the connector on the ISD is fully seated into the control board.



8. Once the ISD is installed and seated correctly, close the access cover, and replace the screw removed in step 3.
9. Reconnect the power cord removed in step 2.



**Caution--Shock Hazard:** To avoid the risk of electrical shock or fire, connect the power cord to an appropriately rated and grounded electrical outlet that is near the product and easily accessible.

10. Turn on the printer and follow the display prompts to format the unit.



## Installing an ISD Card (ST9922)



**Caution--Shock Hazard:** To avoid the risk of electrical shock, turn off the printer and remove the power cord.

1. Turn off the printer.
2. Unplug the power cord from the electrical outlet or from the printer.
3. Open the controller board access cover, by using a flat blade screw and removing the screw and pulling the cover open. See below pictures.



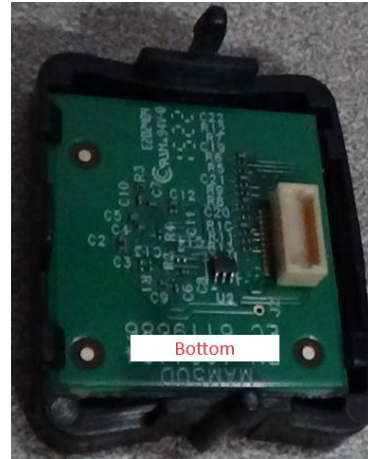
4. Loosen the 2 screws holding the fax module. To allow it to be lifted and slide it out.



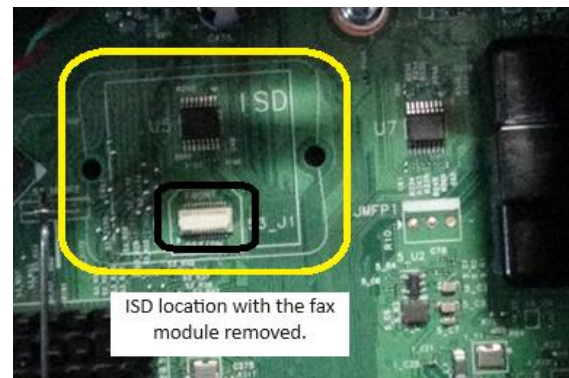
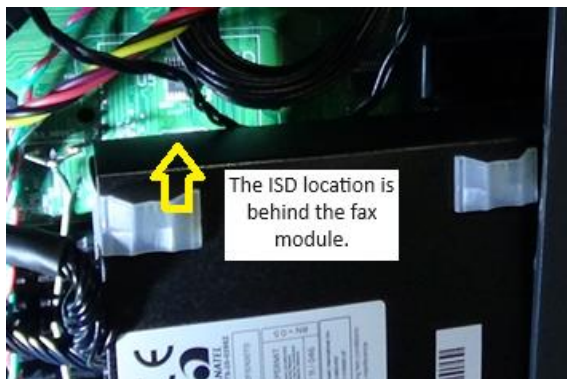
- Unpack the ISD card.

**Warning--Potential Damage:** Do not touch the connection points along the edge of the card. Controller board electronic components are easily damaged by static electricity. Touch a metal surface on the printer before touching any components or connectors.

- With the ISD out of the package. Locate the small connector on the bottom of the board.

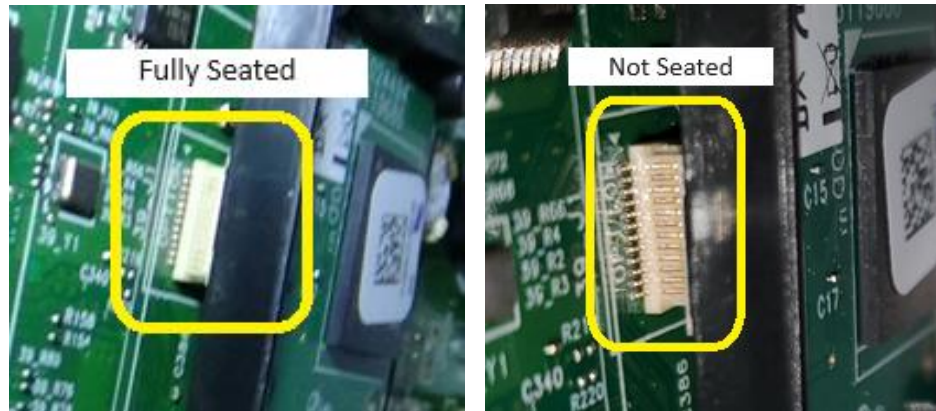


- Locate the ISD Installation area on the control board (Yellow arrow).



- Holding the card by the edges. Align the connector on the bottom of the ISD with the connector on the control board (black rectangle) The ISD mount post will line up with the holes in the control board. Push the ISD firmly into place.

9. Make sure the connector on the ISD is fully seated into the control board. This may require the use of a small mirror.



10. Once the ISD is installed and seated correctly, reinstall the fax module removed in step 4 and tighten the screws.
11. Close the access cover, and replace the screw removed in step 3.
12. Reconnect the power cord removed in step 2.



**Caution--Shock Hazard:** To avoid the risk of electrical shock or fire, connect the power cord to an appropriately rated and grounded electrical outlet that is near the product and easily accessible.

13. Turn on the printer and follow the display prompts to format the unit.

## CONTACT INFORMATION

Source Technologies  
Attn.: Inside Sales

11401A Granite Street, Charlotte, NC 28273  
800.922.8501 (Voice)  
704.522.8579 (Fax)

[www.sourcetech.com](http://www.sourcetech.com)

## Technical Support

### Contact Procedure

Before contacting Technical Support, please gather the following information:

1. Printer Model and Serial number.
2. Contact name and phone number of person at the site.
3. Street address where the printer is located.
4. List of all symptoms the printer is exhibiting.

Contact your company's internal help desk and explain the nature of the problem. For technical support, call: 1.800.922.8501